



**Government of India  
India Meteorological Department  
Regional Meteorological Centre  
Mumbai – 400005**

**Press Release Dated: 10/07/2019  
Time of Issue: 15.00 hrs. IST**

**Heavy Rainfall Warning updates over Konkan**

In addition to the existing synoptic situation of cyclonic circulation over South Gujarat region and adjoining North Maharashtra coast in the midtropospheric levels, now with the strengthening of westerlies over North Konkan, the rainfall intensity is very likely to increase over Palghar, Thane & Mumbai districts during next 24 hours. In view of this the updated heavy rainfall warnings for the Konkan region are as follows:

**District wise Forecast and warnings for Konkan- Goa during the next 5 days over the region:**

District		10-Jul-19	11-Jul-19	12-Jul-19	13-Jul-19	14-Jul-19
<b>Palghar</b>	<i>Intensity</i>	Heavy to very heavy rain at isolated places	Heavy rain at isolated places	Light to moderate rain	Light to moderate rain	Light to moderate rain
	<i>Probability</i>	<i>Very Likely</i>	<i>Very Likely</i>	<i>Very Likely</i>	<i>Likely</i>	<i>Likely</i>
<b>Thane</b>	<i>Intensity</i>	Heavy to very heavy rain at isolated places	Heavy rain at isolated places	Light to moderate rain	Light to moderate rain	Light to moderate rain
	<i>Probability</i>	<i>Very Likely</i>	<i>Very Likely</i>	<i>Very Likely</i>	<i>Likely</i>	<i>Likely</i>
<b>Mumbai</b>	<i>Intensity</i>	Heavy to very heavy rain at isolated places	Heavy rain at isolated places	Light to moderate rain	Light to moderate rain	Light to moderate rain
	<i>Probability</i>	<i>Very Likely</i>	<i>Very Likely</i>	<i>Very Likely</i>	<i>Likely</i>	<i>Likely</i>
<b>Raigad</b>	<i>Intensity</i>	Heavy to very heavy rain at isolated places	Heavy rain at isolated places	Heavy rain at isolated places	Heavy rain at isolated places	Heavy rain at isolated places

	<i>Probability</i>	<i>Very Likely</i>	<i>Very Likely</i>	<i>Very Likely</i>	<i>Likely</i>	<i>Likely</i>
<b>Ratnagiri</b>	<i>Intensity</i>	Heavy rain at isolated places	Heavy rain at isolated places	Heavy rain at isolated places	Heavy rain at isolated places	Heavy rain at isolated places
	<i>Probability</i>	<i>Very Likely</i>	<i>Very Likely</i>	<i>Very Likely</i>	<i>Likely</i>	<i>Likely</i>
<b>Sindhudurg</b>	<i>Intensity</i>	Heavy rain at isolated places	Heavy rain at isolated places	Heavy rain at isolated places	Heavy rain at isolated places	Heavy rain at isolated places
	<i>Probability</i>	<i>Very Likely</i>	<i>Very Likely</i>	<i>Likely</i>	<i>Likely</i>	<i>Likely</i>

**Legends:**

Very light rain	Light rain	Moderate rain	Heavy rainfall	Very Heavy rainfall	Extremely Heavy rainfall
0.1-2.4 mm	2.5-15.5 mm	15.6-64.4 mm	64.5-115.5 mm	115.6-204.4 mm	>204.5 mm

Warning for any day is valid from 8.30 hrs IST of the day till 8.30 hrs IST of next day.

Warning ( Take Action)	Alert ( Be prepared)
Watch( Be updated)	No Warning Nil ( No action )

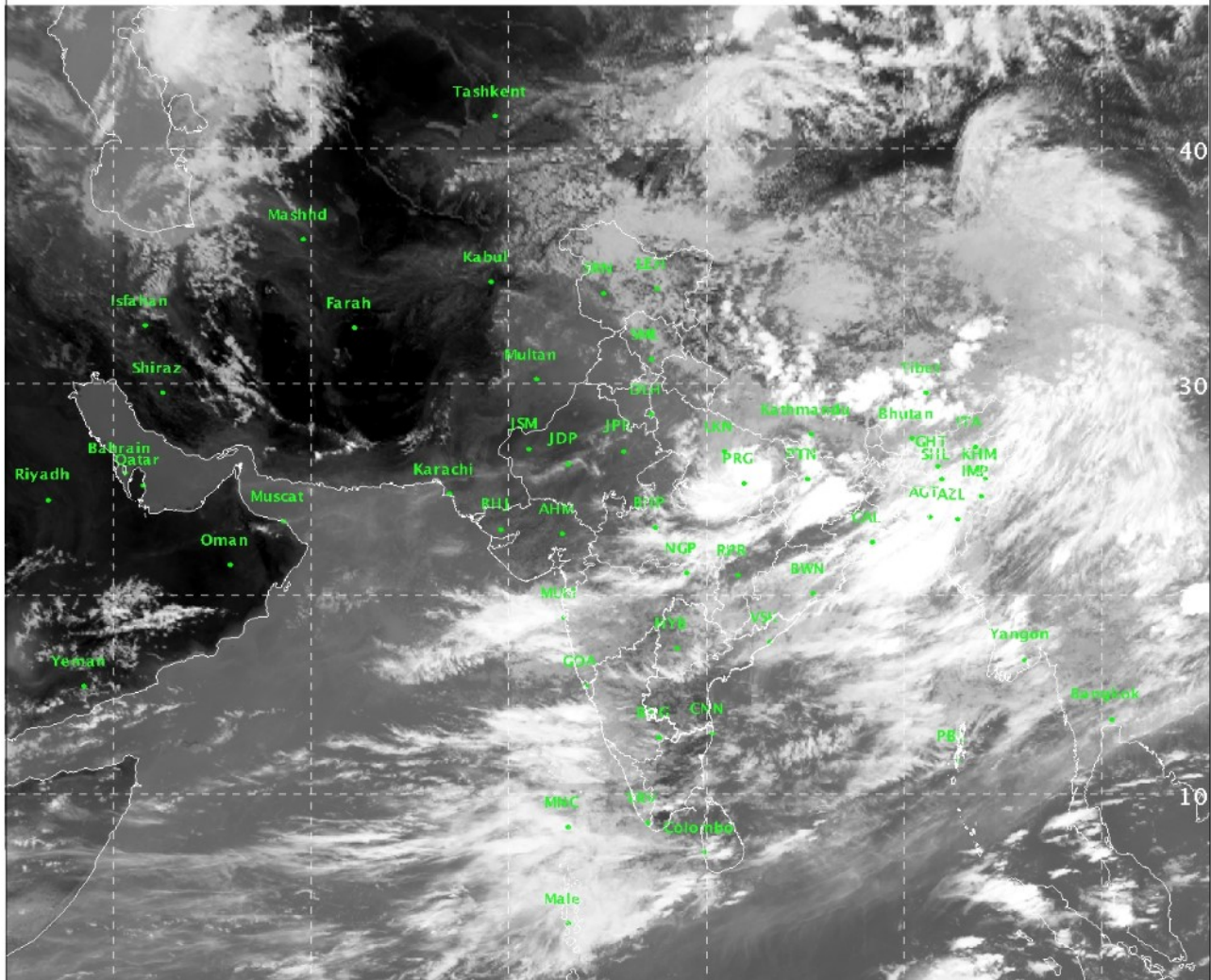
**Local Forecast for Mumbai and around:**

**For 24 hours:**

Intermittent rain is likely to occur in city and suburbs with heavy to very heavy falls at isolated places  
Maximum & minimum temperatures likely to be around 27 deg. C & 24 deg. C respectively.

**For 48 hours:**

Intermittent rain is likely to occur in city and suburbs with heavy falls at isolated places.  
Maximum & minimum temperatures likely to be around 27 deg. C & 24 deg. C respectively.



**Current satellite imagery**

Further details are available on websites of IMD HQ , IMD Mumbai and IMD Nagpur.

Kindly visit the IMD websites:

<http://www.imd.gov.in>

<http://www.imdmumbai.gov.in>

<http://www.imdnagpur.gov.in/pages/drif.php>

**Regional Weather Forecasting Centre  
RMC Mumbai**

**Phone: +91 022 22150431/22174719/22174735**

