



प्रादेशिकमौसमकेंद्र, कोलाबा , मुंबई

Regional Meteorological Centre, Mumbai

Dated: 22 July 2021

Time of issue: 0130 hrs

IMPACT BASED FORECAST FOR HEAVY RAINFALL OVER MUMBAI

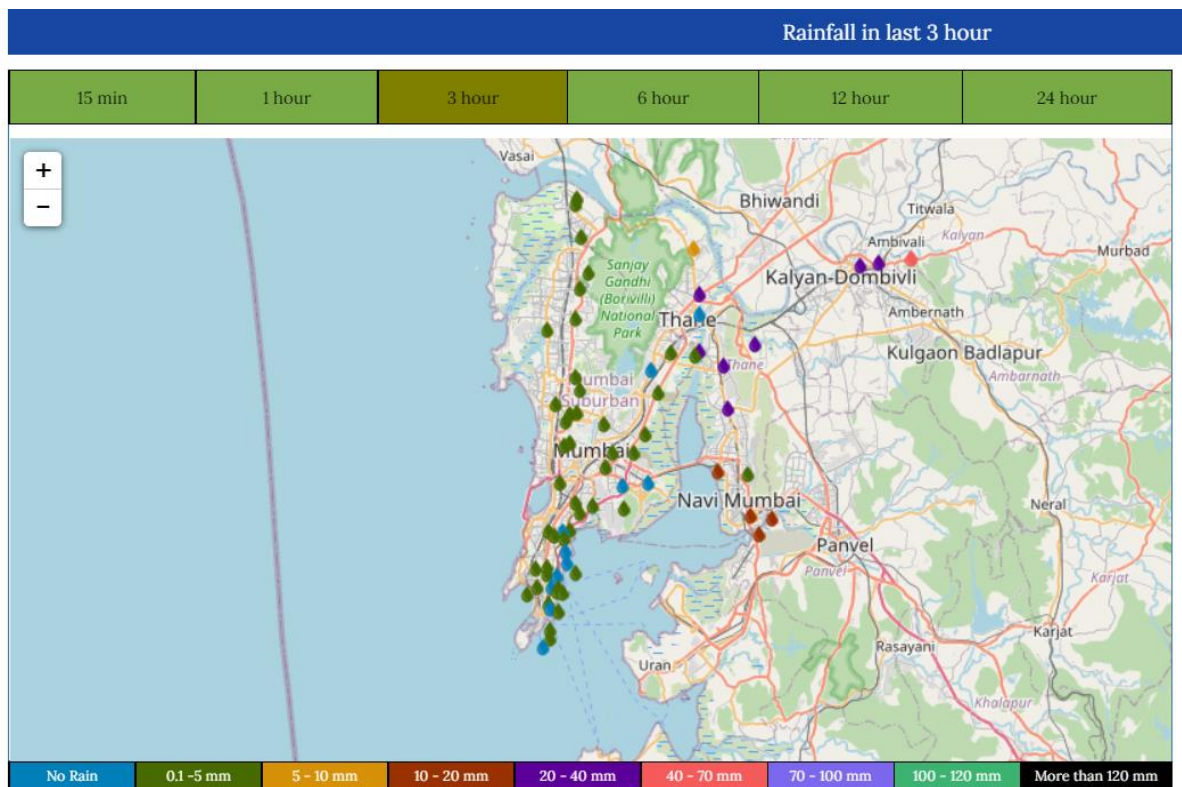
Updates of Ongoing Heavy Rainfall Event

<p>Rainfall Realised at 1230 hrs IST of 22 July 2021 (from 0830 hrs IST of 21 July 2021)</p>	<p>Mumbai city and suburbs experienced Light to moderate rainfall with intense spells towards eastern parts of suburbs during past 3 hrs. (Map attached)</p> <p>Bhayander -46.0 mm, Dahisar -49.0 mm, Mahalaxmi -57.5 mm, Mira Road -47.0 mm, Ram Mandir -68.5mm, Bandra -58.5 mm</p>
<p>Forecast for next 3-4 hrs</p>	<p>As per latest observations, Mumbai city and suburbs are very likely to experience intense spells of rainfall accompanied with gusty winds reaching 40-50 kmph gusting to 60 kmph during next 3-4 hours. Possibility of thunder/lightning in some areas.</p>
<p>Warning for 24 hours (from 0830 hrs of the day to 0830 hrs of next day)</p>	<p>Heavy to very heavy rainfall at a few places with extremely heavy rainfall at isolated places. Possibility of occasional gusty winds reaching 40-50kmph gusting to 60 kmph</p>
<p>Impact Expected</p>	<ul style="list-style-type: none">• Water logging/inundation in most parts of low lying areas and river banks• Possibility of cloud to ground lightning.• Disruption to road, rail, air and ferry transport. Major roads and local trains affected.• Possibility of flash floods coinciding with high tide.• Local disruption of municipal services (Water, electricity etc.)• Flow of water over low-lying roads and bridges.• Possibility of danger to very old buildings and unmaintained structures• Occasional gusty winds with speed reaching 40-50 gusting to 60 kmph along and off the coast resulting in possibilities of damage to vulnerable /temporary structures.

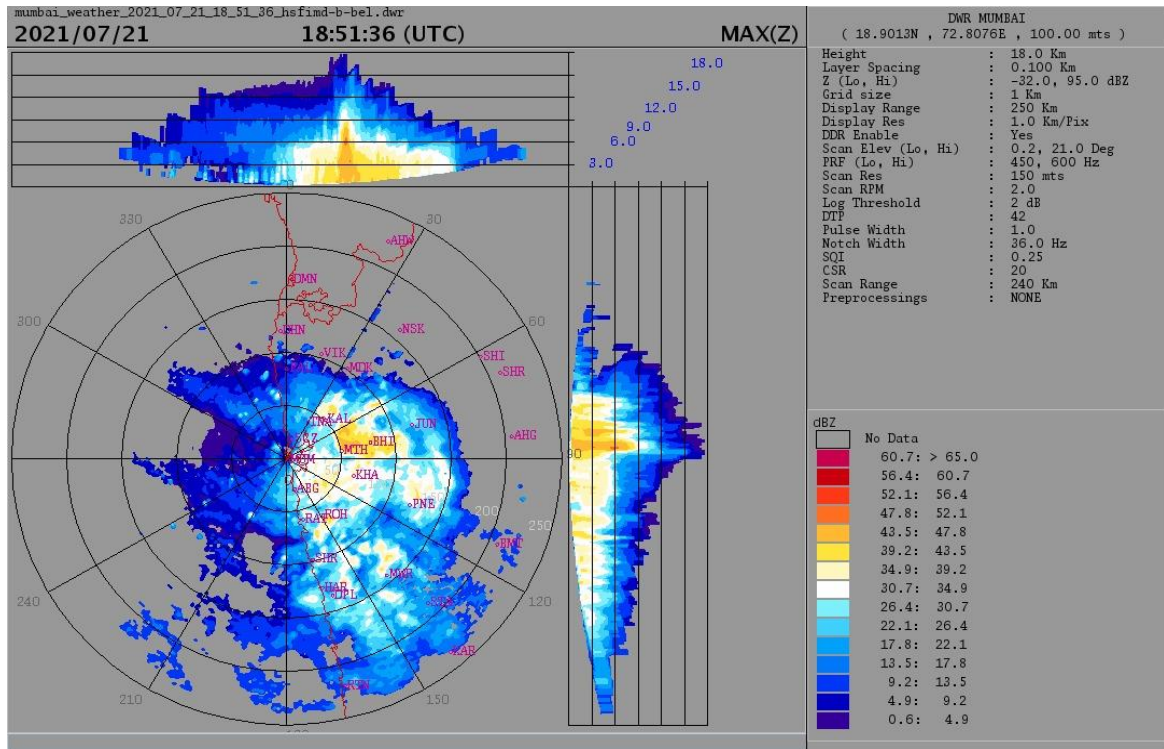
	<ul style="list-style-type: none"> • Landslide/Mudslides and rock falls in vulnerable areas. • Rough Sea conditions along the coast.
Action Suggested	<ul style="list-style-type: none"> • Traffic may be regulated effectively • People staying in vulnerable places may take caution.

COLOR CODES	
Very Low	No action
Low	Be updated
Medium	Be prepared
High	Take Action

Rainfall realised during past 3 hours:

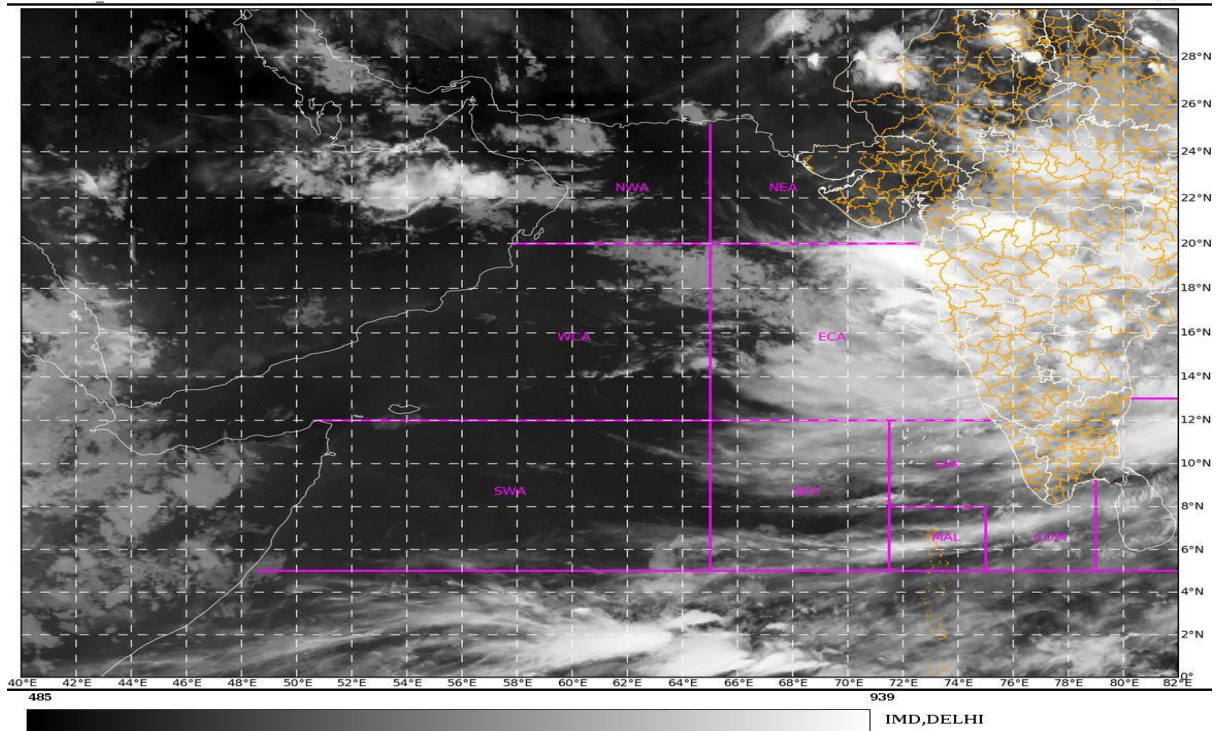


Current satellite and radar imageries:



SAT : INSAT-3D IMG
 IMG_TIR1 10.8 um
 ARABIAN SEA

21-07-2021/(1900 to 1926) GMT
 22-07-2021/(0030 to 0056) IST



Legends:

Rainfall Intensity			
Terminology	Rainfall Range	Terminology	Rainfall Range
Light Spell	1 cm /hr	Very Intense Spell	3-5 cm/hr
Moderate Spell	1-2 cm/hr	Extremely Intense Spell	5-10 cm/hr
Intense Spell	2-3 cm/hr	Cloud Burst	>10 cm/hr

Rainfall Categories			
Terminology	Rainfall (in mm)	Terminology	Rainfall (in mm)
Very Light Rainfall	Trace- 2.4	Heavy Rainfall	64.5-115.5
Light Rainfall	2.5-15.5	Very Heavy Rainfall	115.6-204.4
Moderate Rainfall	15.6-64.4	Extremely Heavy Rainfall	>=204.5

Regional Weather Forecasting Centre

RMC Mumbai

Phone: [+91 022 22150431](tel:+9102222150431)/[22174719](tel:+9102222174719)/[22174735](tel:+9102222174735)